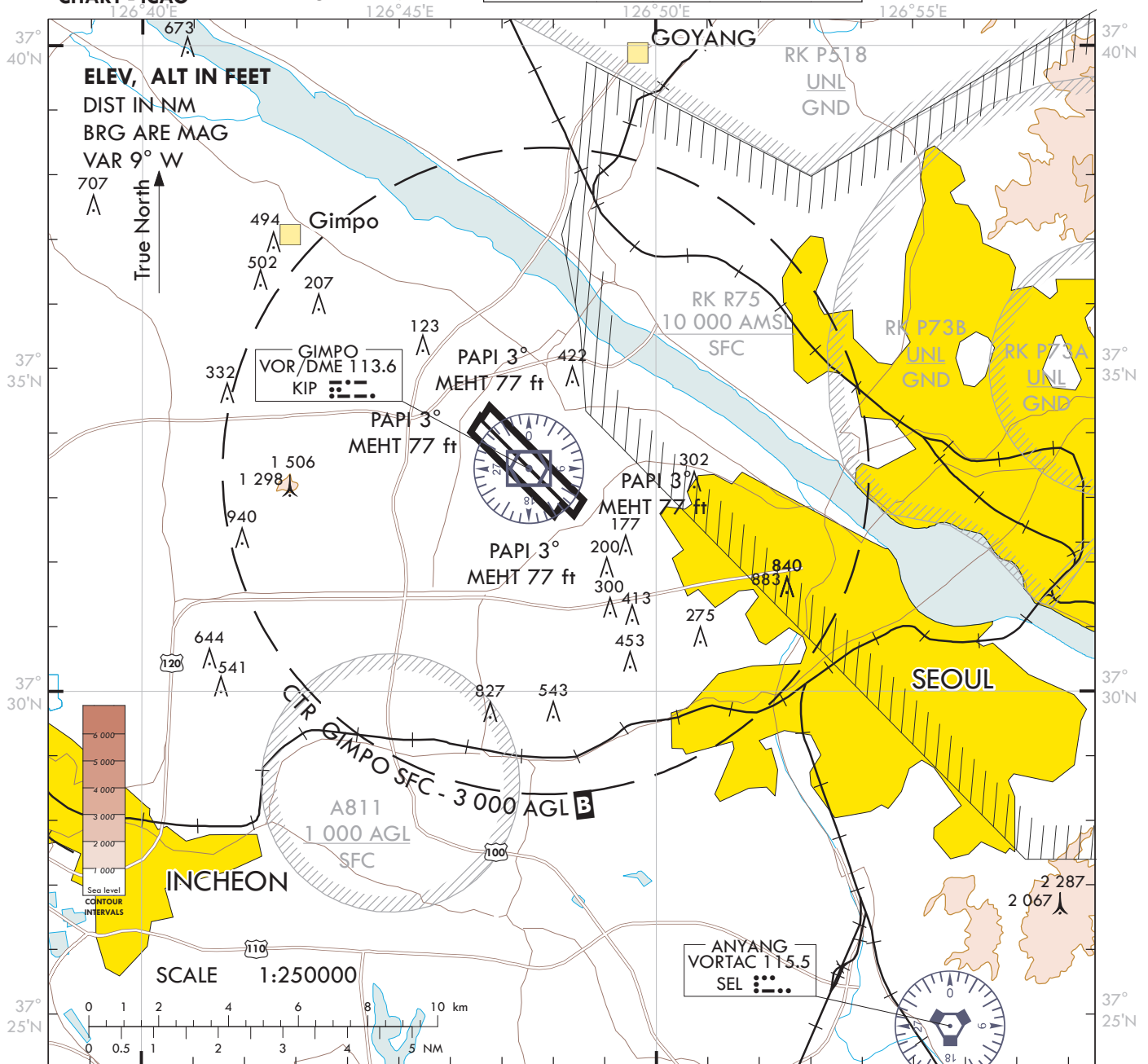


**VISUAL  
APPROACH  
CHART - ICAO**

AD ELEV **59** ft  
HEIGHTS RELATED  
TO AD ELEV

SEOUL APP	119.75	121.35	119.1	124.7	305.7
DEP	119.05	125.15	124.8	123.8	363.8
GIMPO TWR	118.1	118.05	240.9		

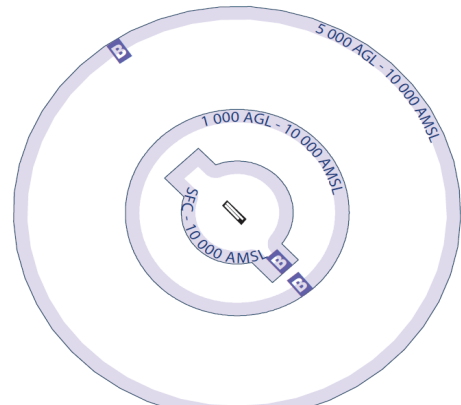
**SEOUL/Gimpo INTL**



**ATS Airspace Classifications**

- Class B : Radius of Gimpo airports**
  - Vertical limits
    - Within 5 NM including areas which are extended northbound from 37°36'46"N 126°39'26"E - 37°39'44"N 126°43'10"E - 37°38'03"N 126°45'18"E - 37°34'58"N 126°41'42"E, and southbound from 37°28'40"N 126°49'38"E - 37°30'36"N 126°52'52"E - 37°29'07"N 126°54'44"E - 37°26'52"N 126°51'53"E - 37°36'46"N 126°39'26"E
    - Within 5 NM - 10 NM (1 000 ft AGL - 10 000 ft AMSL)
    - Within 10 NM - 20 NM (5 000 ft AGL - 10 000 ft AMSL)
  - \* Class D : Airspace from above 10 000 ft AMSL to FL 200 within Seoul TMA, excluding Class B
  - Speed limits : 250 kt IAS or less below 10 000 ft AMSL
- Class E :**
  - Vertical limits
    - Controlled Airspace from 1 000 ft above the surface or the sea level to FL 600 and less except Class A, B, C and D
  - Speed limits : 250 kt IAS or less below 10 000 ft AMSL

**<Airspace Classification>**



Change : Information of SEOUL APP FREQ(119.9MHz → 124.7MHz).